

P21XXCSR-EVB

P21XX Powerharvester[®] Chipset Reference Design Evaluation Board Overview

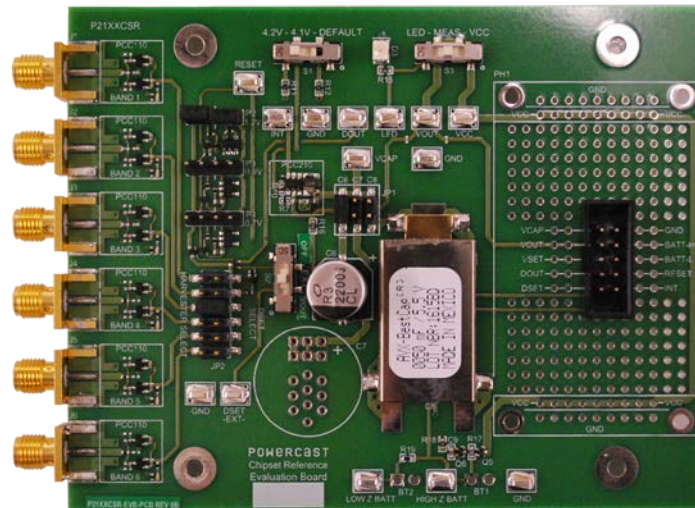


DESCRIPTION

The P21XXCSR-EVB is an evaluation board featuring PCC110 and PCC210 chips with support for six frequency bands to test and develop with the Powerharvester[®] Chipset Reference Design. The P21XXCSR converts radio frequency (RF) energy into DC power and stores it in a capacitor to provide an intermittent, regulated voltage output.

FREQUENCY BANDS SUPPORTED

Band	Band (MHz)
GSM-850 uplink	824 – 849
Europe RFID & GSM-850 downlink	865 – 894
ISM USA & GSM-900 uplink	880 – 928
GSM-1800 uplink	1710 – 1785
GSM-1900 uplink	1850 – 1910
WiFi 2.4GHz	2400 – 2500



ORDERING INFORMATION

The P21XXCSR can be evaluated on the P21XXCSR-EVB evaluation board. Available at:



<http://www.mouser.com/powercast/>

Contact Powercast for information about obtaining one of the reference designs on the P21XXCSR-EVB for integration onto your PCB. The chipset is listed under part numbers PCC110 & PCC210. Additional CSR designs are available to support different frequencies and power ranges. Send requests to:

contact@powercastco.com.